

Bullabulling Gold Project

Eastern Goldfields, Western Australia

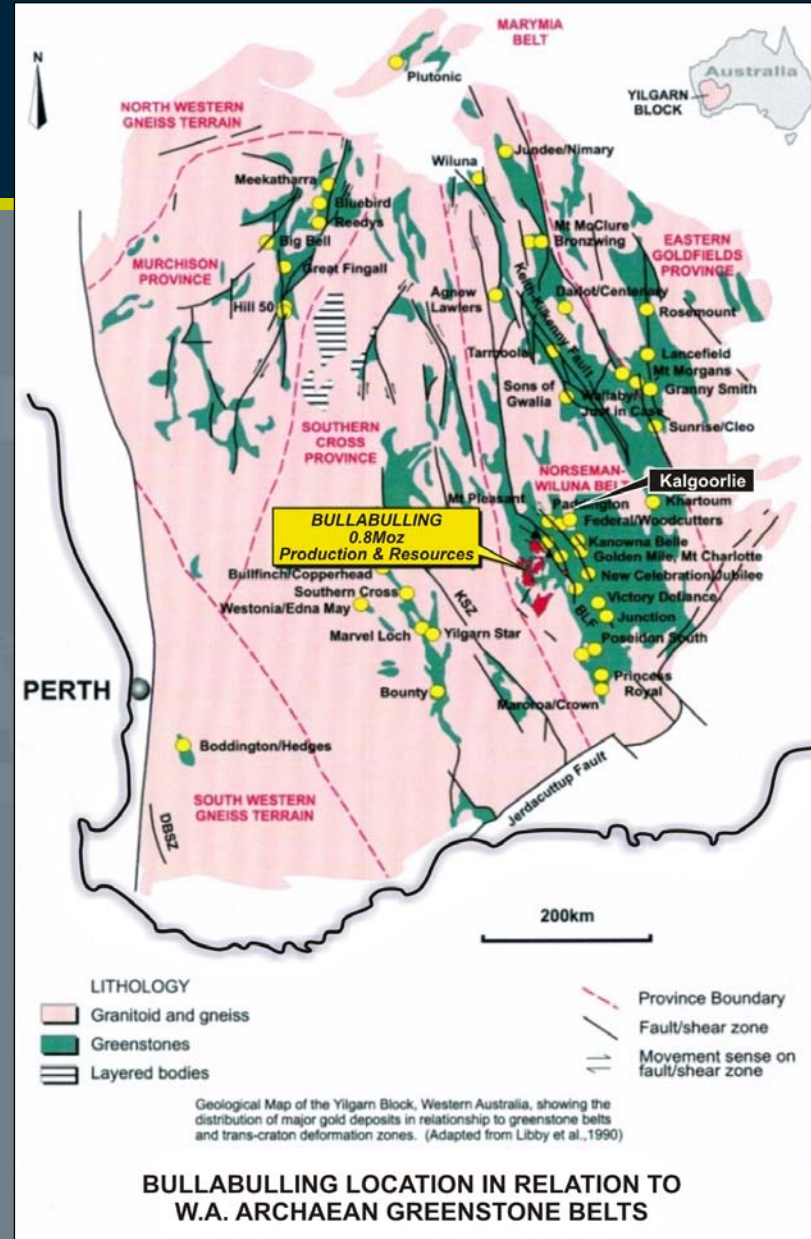
New approach to revive under-explored Goldfield

Bullabulling - Overview

- Established resource - 9.3M tonnes at 1.4g/t gold (431,600ozs) – in WA’s Yilgarn Craton gold province;
- Auzex has identified significant upside potential;
- Granted mining tenure, existing infrastructure, access to power and water, \$30M exploration database;
- Modern geological/mining techniques set to increase resource size and grades;
- Fast-track Bankable Feasibility Study work ready to begin;
- **Immediate uplift for Auzex shareholders starting with drilling, a resource upgrade and fast-tracked BFS.**

A Pedigree Address

- World Class Gold Province: Yilgarn Craton of WA;
- 19 known gold deposits of +100t Au;
- Bullabulling Project area under-explored;
- Gold associated with a regional scale shear zone extending over 33km;
- Project straddles Great Eastern Hwy 70km SW of Kalgoorlie.



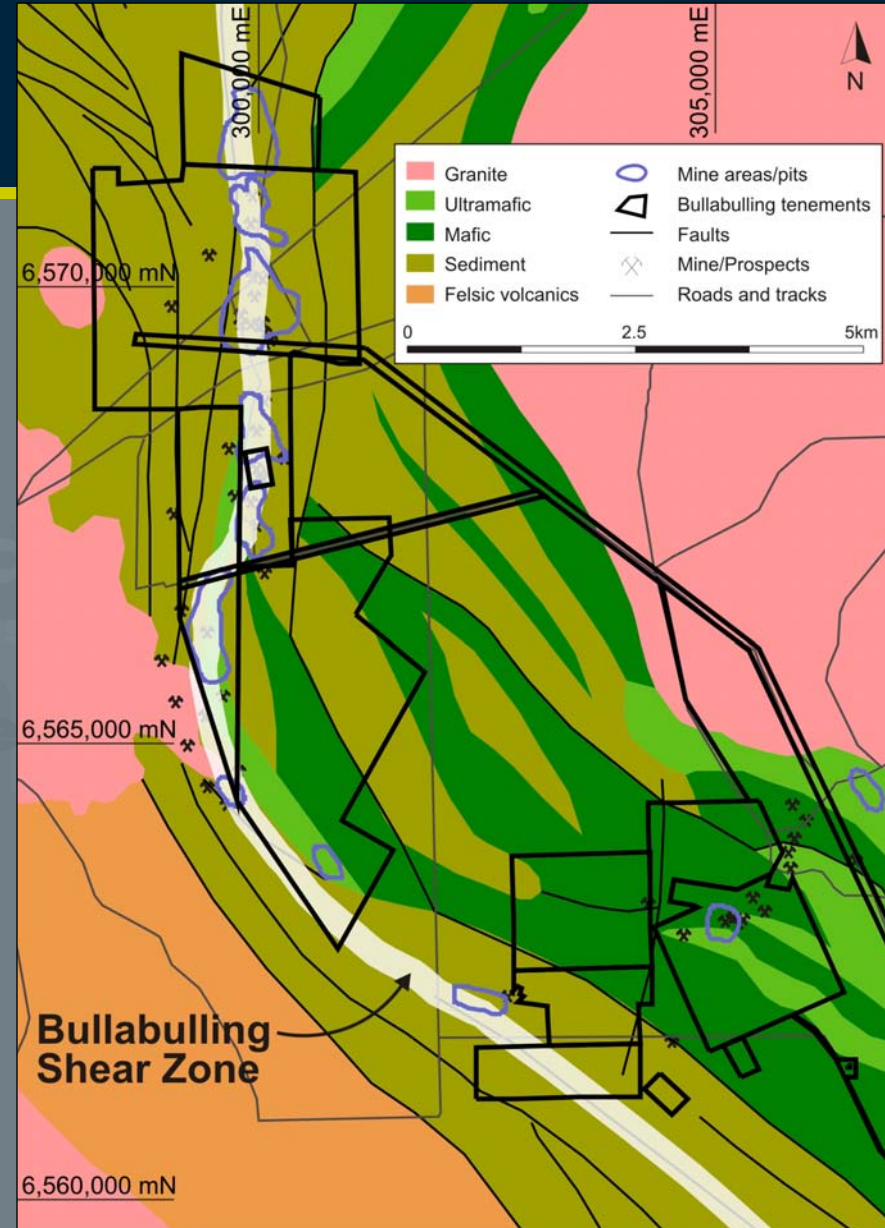
For personal use only

Bullabulling Production History

- Limited mining in 1890's;
- Mining since 1988 - focused on near-surface ore;
- Production 7.9M tonnes at 1.45 g/t gold (371,474 oz);
- Ore mined predominantly from shallow pits (30m) along a mineralised strike of 12 km;
- Some primary ore mined with deepest pit to 80m depth;
- Grade of ore increases with depth;
- Modern resource and spatial data modelling techniques can now fully scope resource.

Bullabulling Assets

- 2,422 hectares of granted mining tenure;
- Nine gold resources along mineralised 12 km zone;
- Extensive exploration database - \$30M replacement value;
- 25,000 oz gold (A\$30M) in dumps and ROM pads at surface;
- Existing mining infrastructure.



The Opportunity

- **Significantly increase resource at low discovery cost;**
- **Excellent potential for high-margin operation with strong financials;**
- **Short development period utilising current assets (tenure and infrastructure);**
- **Targeting potential for +1 million oz* contained gold supporting a possible 100,000 oz p/a operation with minimum 10-year mine life.**

**Based on the known dimensions of gold mineralisation and recent studies confirming its continuity and openness along strike and down dip. The potential quantity and grade is conceptual in nature and there has been insufficient exploration to define a Mineral Resource. It is uncertain if further exploration will result in the determination of a Mineral Resource.*

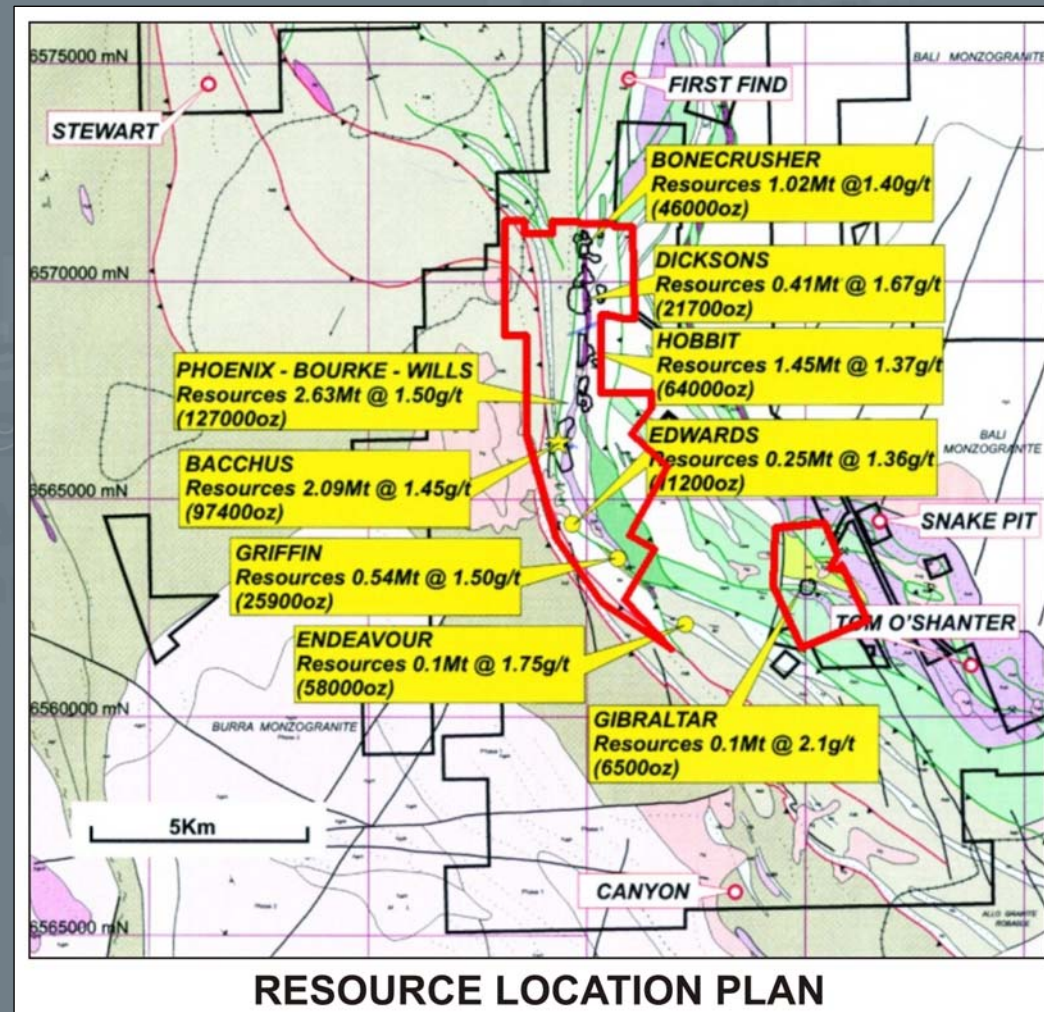
Auzex's Insight

- **Management's specialised gold sector experience;**
- **Understanding of regional geology;**
- **Primary gold not focus of previous owners;**
- **Increased gold price lifts viability of lower-grade ores;**
- **Higher-grade primary ores yet to be fully scoped;**
- **Conditions now right for Bullabulling.**

Bullabulling Resources

- 431,600 oz gold in 9 centres;
- JORC compliant in 1988, but require upgrading to the current JORC Code;
- New drilling between pits and at depth expected to increase resource base.

Note: Resource tonnes and contained gold figures have been rounded



For personal use only

Current Resource

- Existing gold resources – as estimated in 1988:

Resource Category	Tonnes	Grade g/t Au	Contained Gold oz
Measured	4,865,000	1.51	237,000
Indicated	4,159,000	1.35	180,800
Inferred	284,000	1.52	13,900
Total	9,308,000	1.44	431,600

0.7 g/t cut-off grade

Reserves based on US\$350/oz Gold Price

For personal use only

High-Grade Mineralisation

- Gold mineralisation open in all directions, especially at depth where high grades intersected;
- Geological modelling using current database has identified **continuous gold zones at 5-10 g/t Au within a broad 2 g/t Au envelope in primary mineralisation;**
- Extensive drilling data available (approx 403km) for new resource model;
- Re-optimising resources at current gold price of over **A\$1,200/oz.**

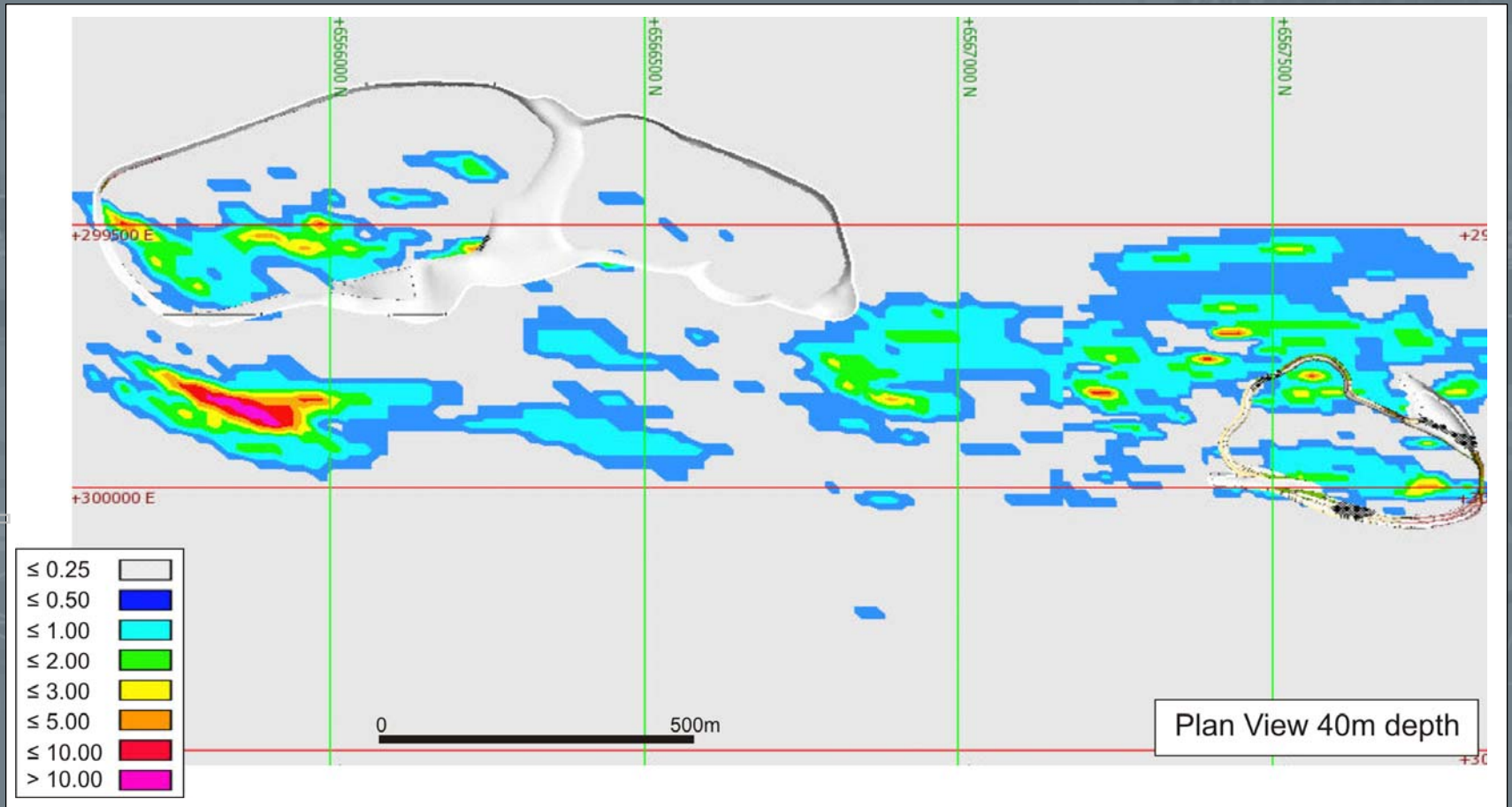
High Grade Gold in Primary Zone

- One of the main targets for exploration will be to extend the high grade mineralisation beneath the supergene mineralisation;
- High grade intersections to be followed up:
 - Dicksons: 4m at 14.5 g/t Au;
 - Hobbit: 9m at 10.5 g/t Au;
 - Edwards: 9m at 11.9 g/t Au;
 - Endeavour: 3m at 21.2 g/t Au;
 - Bacchus: 7m @ 77g/t Au, 5m @ 14g/t Au, 4m @ 5.08g/t Au, 3m @ 4.43g/t Au and 3m @ 9.16g/t Au.

For personal use only

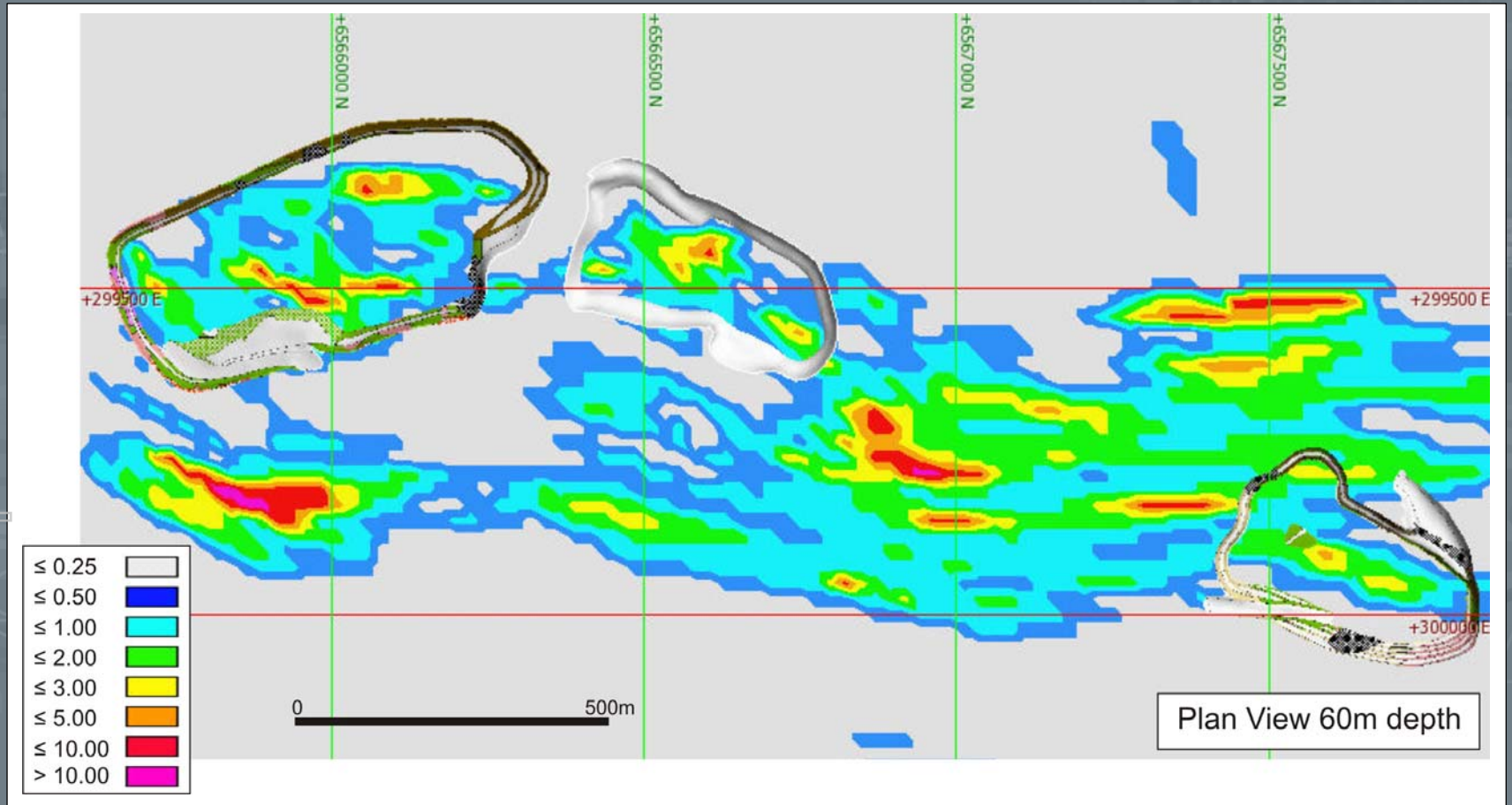
Increasing Gold Resources

For personal use only



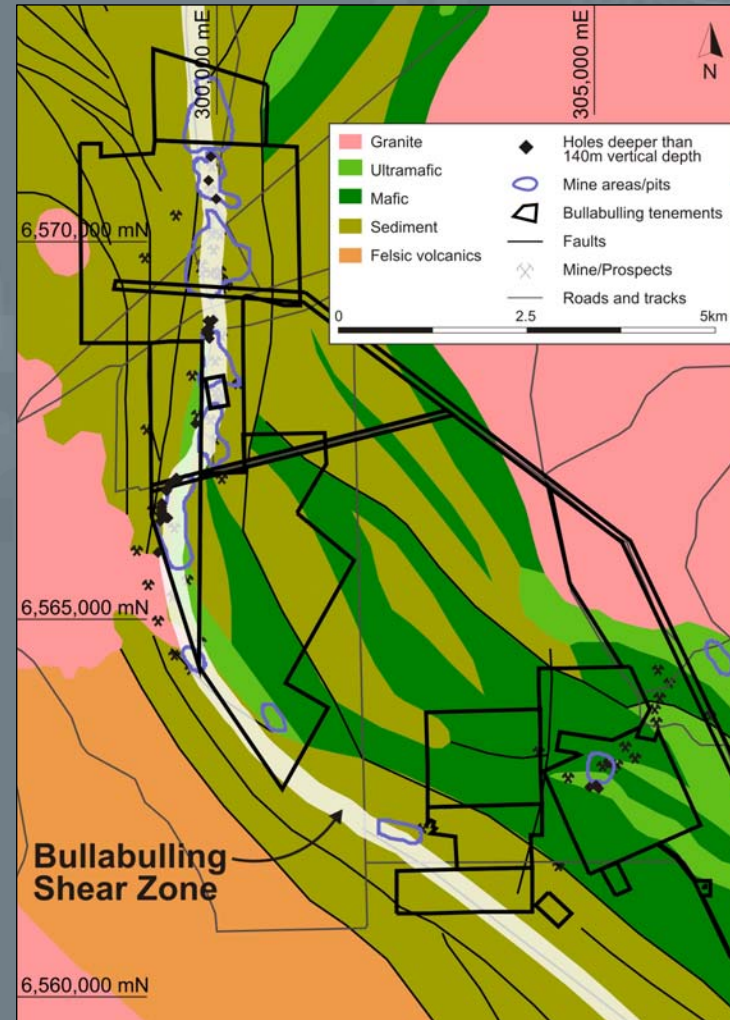
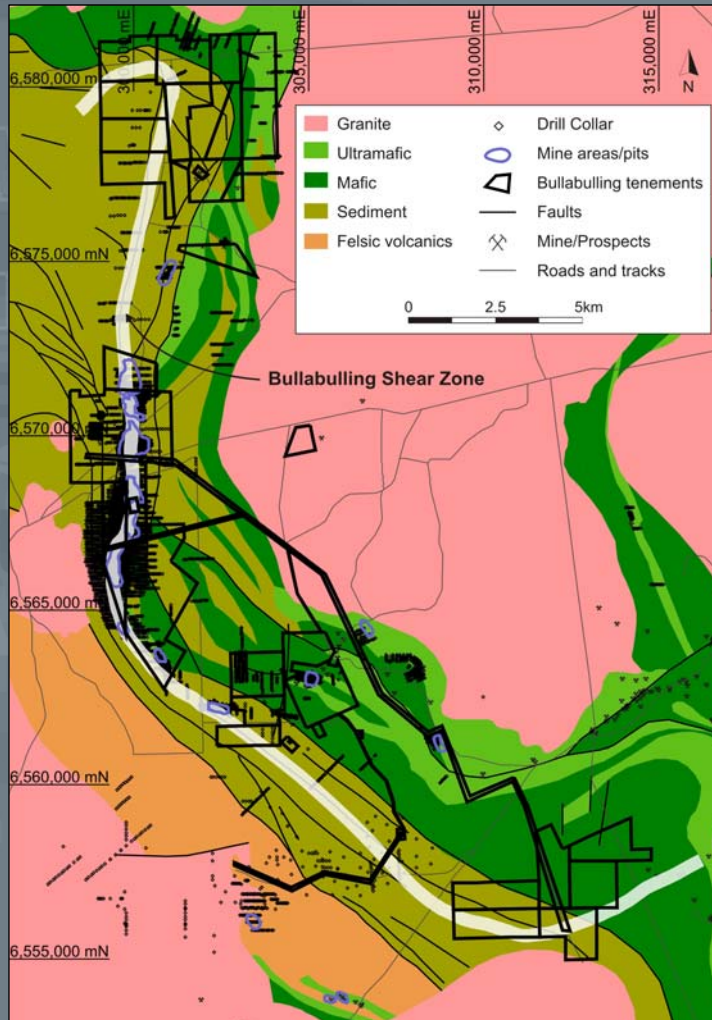
Increasing Gold Resources *continued*

For personal use only



Bullabulling Drill Data

For personal use only



Bullabulling Near-Term Value

- A\$30M gold in surface resources, dumps and broken ore in pit floor;
- A\$600oz gold price (1988) used for development produced a cut-off grade of 0.7 g/t Au;
- A\$1,200oz gold price (2010) likely to reduce cut-off grade to 0.4 g/t Au;
- Optimised pits to improve resource-to-reserve conversion without any new exploration success;
- 5-10 g/t Au zones mapped within continuous 2 g/t Au mineralised envelope - along strike and beneath current pits;
- Low exploration costs.

Joint Venture Approach

- **50:50 joint venture with Central China Goldfields (CCG);**
- **CCG is an exploration company listed on the Alternative Investment Market (AIM) of the London Stock Exchange;**
- **CCG paid \$500k option fee plus \$2.5M for 50% stake;**
- **Due Diligence completed and JV Committee active, with management & funding based on equity interest;**
- **Fast track Bullabulling to bankable feasibility within 12-18 months at estimated cost of \$2.0-3.0 million.**

Project Development Approach

**Compile and QA all
Historic Data**

**Measure Prospectivity
using 3D Modelling**

**Measure Resources using
Modern Geostatistics**

**Simulate Economic Value
using Optimisation**

**Early Development on
Current Mining Leases
while increasing
Resource Base**

Plan for 2010

- **June 2010:** Complete acquisition;
- **June 2010:** Commence first diamond drill holes;
- **July 2010:** Complete geological and resource modelling;
- **Aug. 2010:** Complete scoping study, release new resource potential and resource drilling plan;
- **Sept. 2010:** Start resource drilling and bankable feasibility study;
- **Oct. 2010:** Commence exploration drilling.



Corporate Details

- **ASX Code: AZX**
- **Shares Currently on Issue: Ordinary Fully Paid 51,015,095
Options 14,767,926**
- **Share Price: \$0.20
(as 12 April 2010)**
- **Market Cap.: \$10.2M**
- **Cash Position: \$0.86M
(as at 31 March 2010)**



Directors:
John Lawton, Greg Partington
Chris Baker, Eugene Iliescu, Paul Frederiks

Company History

- Incorporated: 29 September 2003;
- Public Company: 07 July 2005;
- IPO & ASX Listing: 04 October 2005 (\$5.0M)
(\$0.50 per share);
- Management ex-Ross Mining;
- Extensive experience in gold exploration, project development, mining and company growth;
- Six projects in development – gold, tin, molybdenum;
- **Gold Focus: Fast-tracking Bullabulling.**

Note

Competent Person Statement

The information in this presentation that relates to Exploration Results, Mineral Resources and Ore Reserves is based on information compiled by John Lawton who is a full-time employee of the Company and Member of The Australasian Institute of Mining and Metallurgy. He has sufficient experience that is relevant to the style of mineralisation and type of deposit under consideration and to the activity which he is undertaking to qualify as a Competent Person as defined in the 2004 Edition of the 'Australasian Code for Reporting Exploration Results, Mineral Resources and Ore Reserves'. John Lawton consents to the inclusion in the report of the matters based on his information in the form and context in which it appears.

Disclaimer

Auzex Resources Limited (Auzex) has not considered the financial position or needs of the recipient in providing this presentation. Persons needing advice should consult their stockbroker, bank manager, solicitor, attorney, accountant or other independent financial or legal advisors. This presentation includes certain “forward-looking statements” which are not historical facts but rather are based on Auzex’s current expectations, estimates and projections about the industry in which Auzex operates, and beliefs and assumptions regarding Auzex’s future performance. Words such as “anticipates”, “expects”, “intends”, “plans”, “believes”, “seeks”, “estimates”, “conceptual” and similar expressions are intended to identify forward-looking statements.

These statements are not guarantees of future performance and are subject to known and unknown risks, uncertainties and other factors, some of which are beyond the control of Auzex, are difficult to predict and could cause actual results to differ materially from those expressed or forecasted in the forward-looking statements. Auzex cautions shareholders and prospective shareholders not to place undue reliance on these forward-looking statements, which reflect the view of Auzex only as of the date of this presentation. The forward-looking statements made in this presentation relate only to events as of the date on which the statements are made. Auzex will not undertake any obligation to release publicly any revisions or updates to these forward-looking statements to reflect events, circumstances or unanticipated events occurring after the date of this presentation except as required by law or by any appropriate regulatory authority.